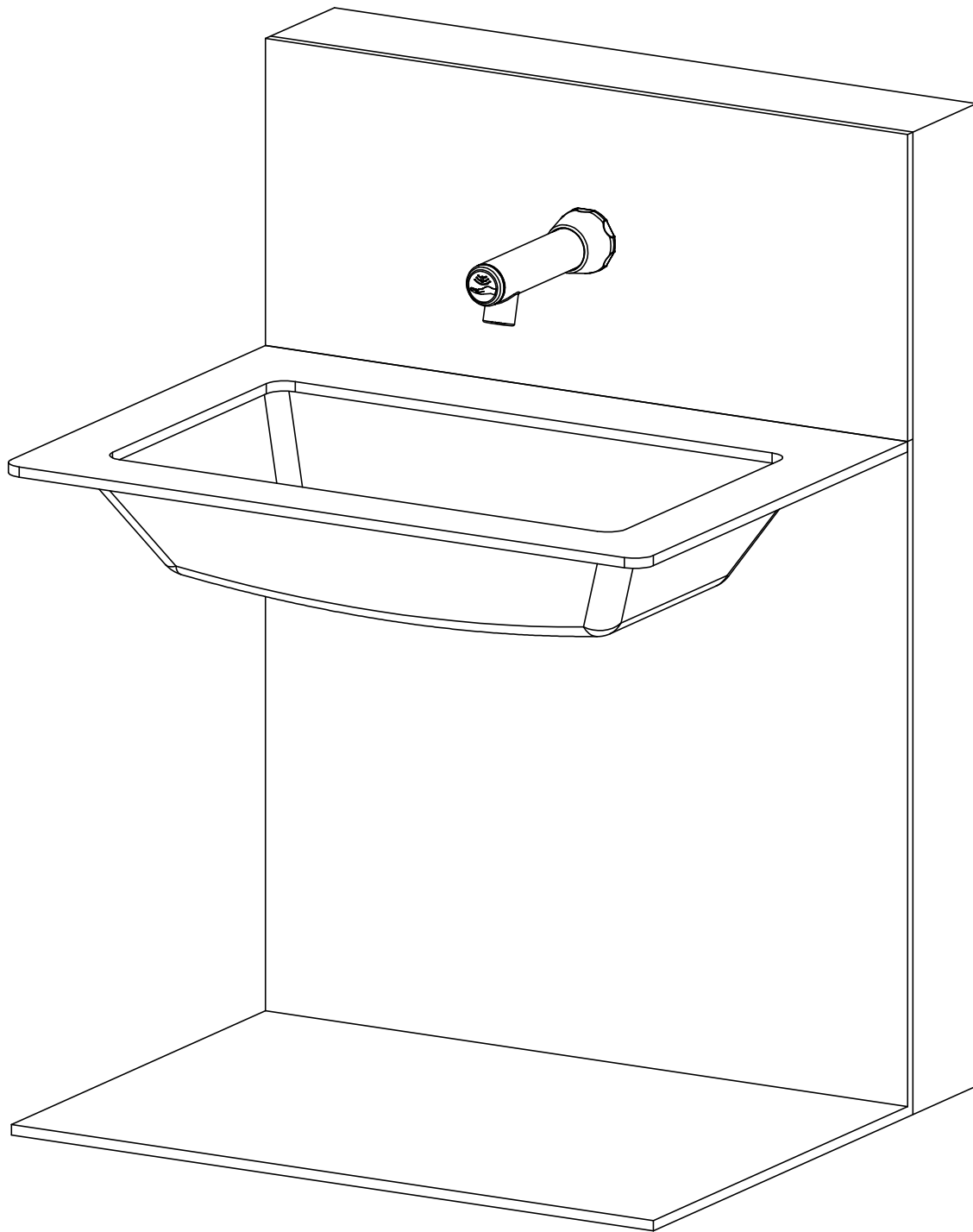
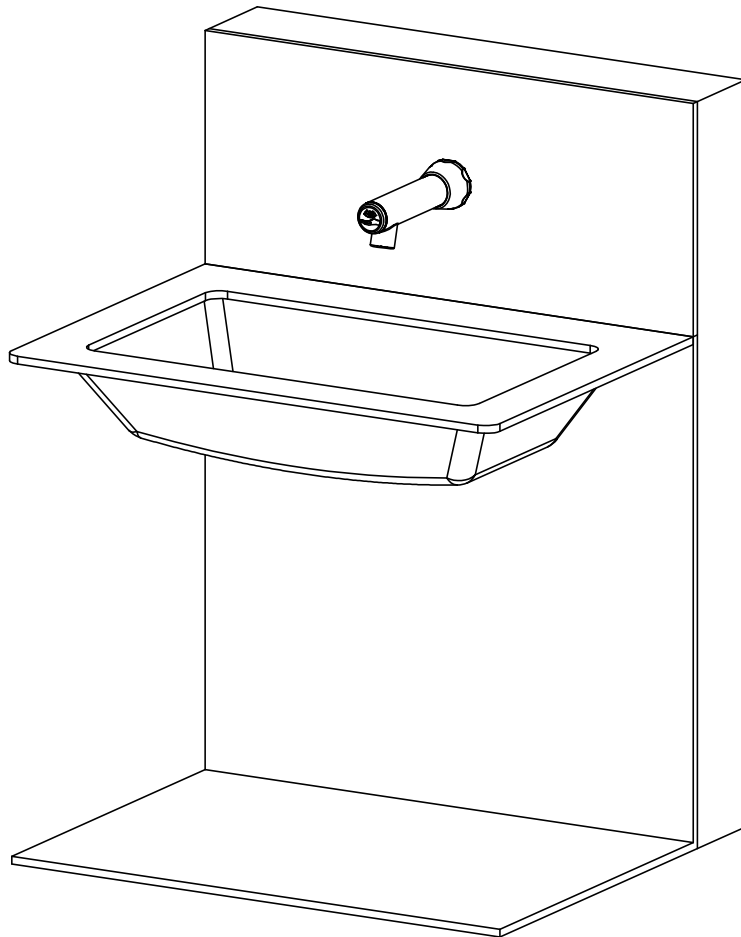


# WST18 Wall-Mounted Integrated Sensor Faucet Installation and Use Manual



# WST18B Wall-Mounted Integrated Sensor Faucet Installation Manual



## List of Tools

Phillips screwdriver

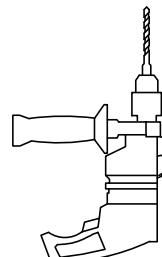
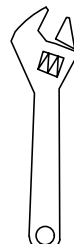
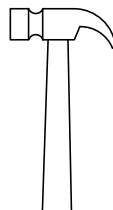
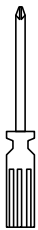
Flathead screwdriver

Utility knife

Hammer

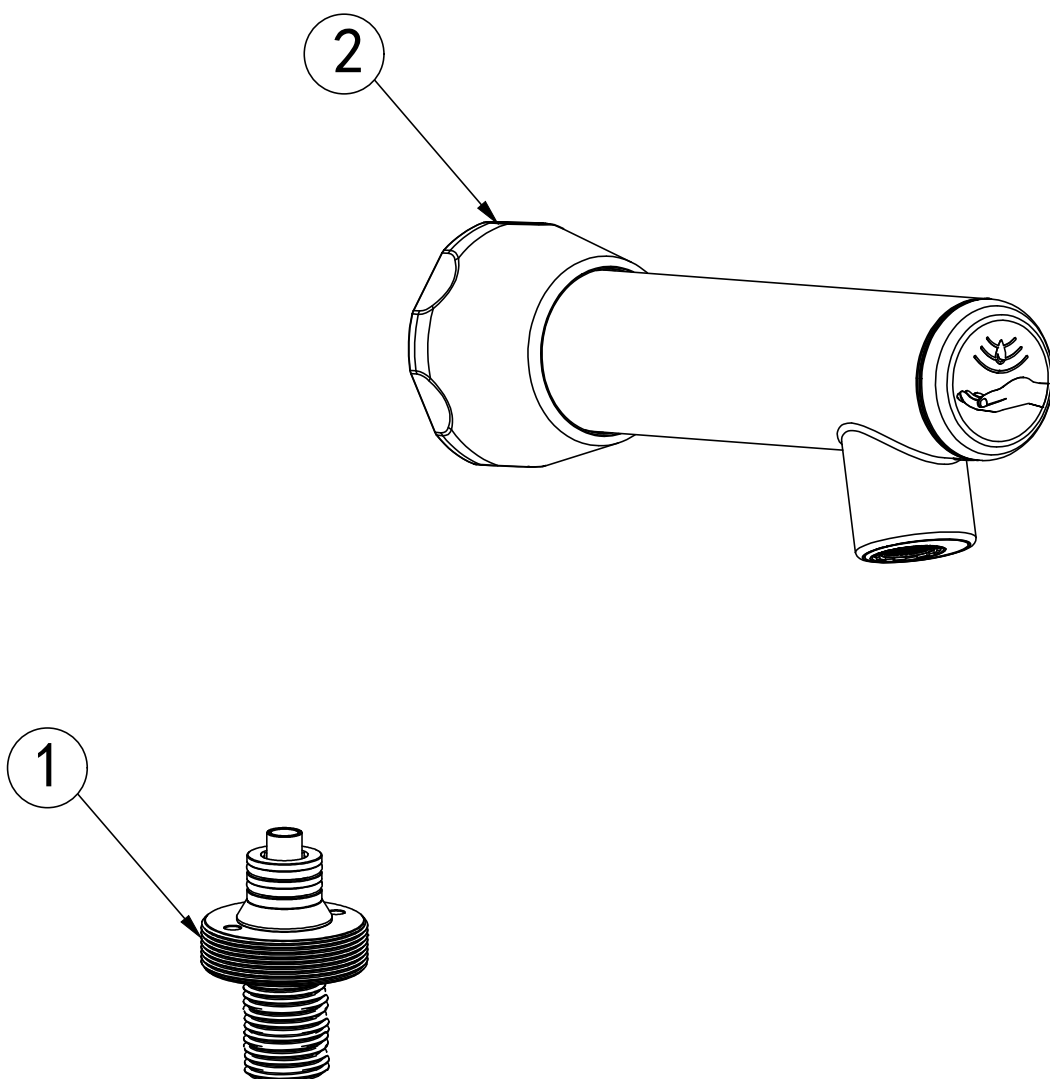
Adjustable wrench

Impact drill



# Prepare product accessories

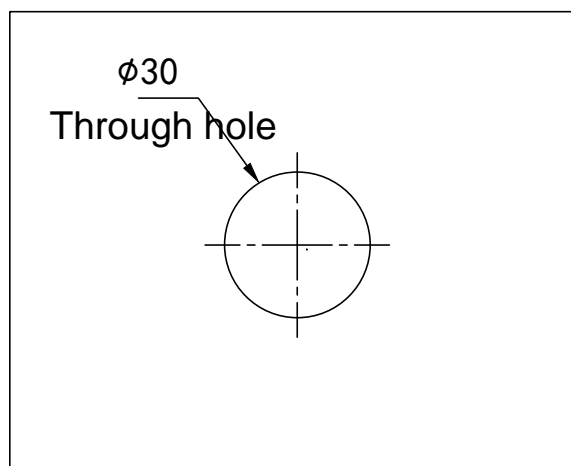
1. Self-closing valve
2. Faucet



# Installation process

## 1.Preparing hole positions:

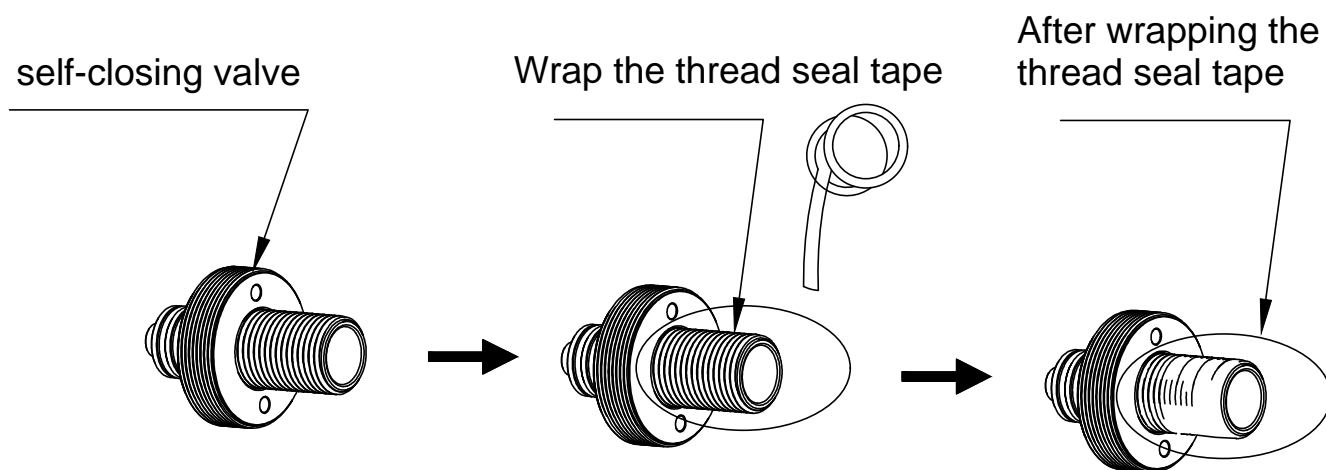
Prepare holes according to the dimensions on the drawing.

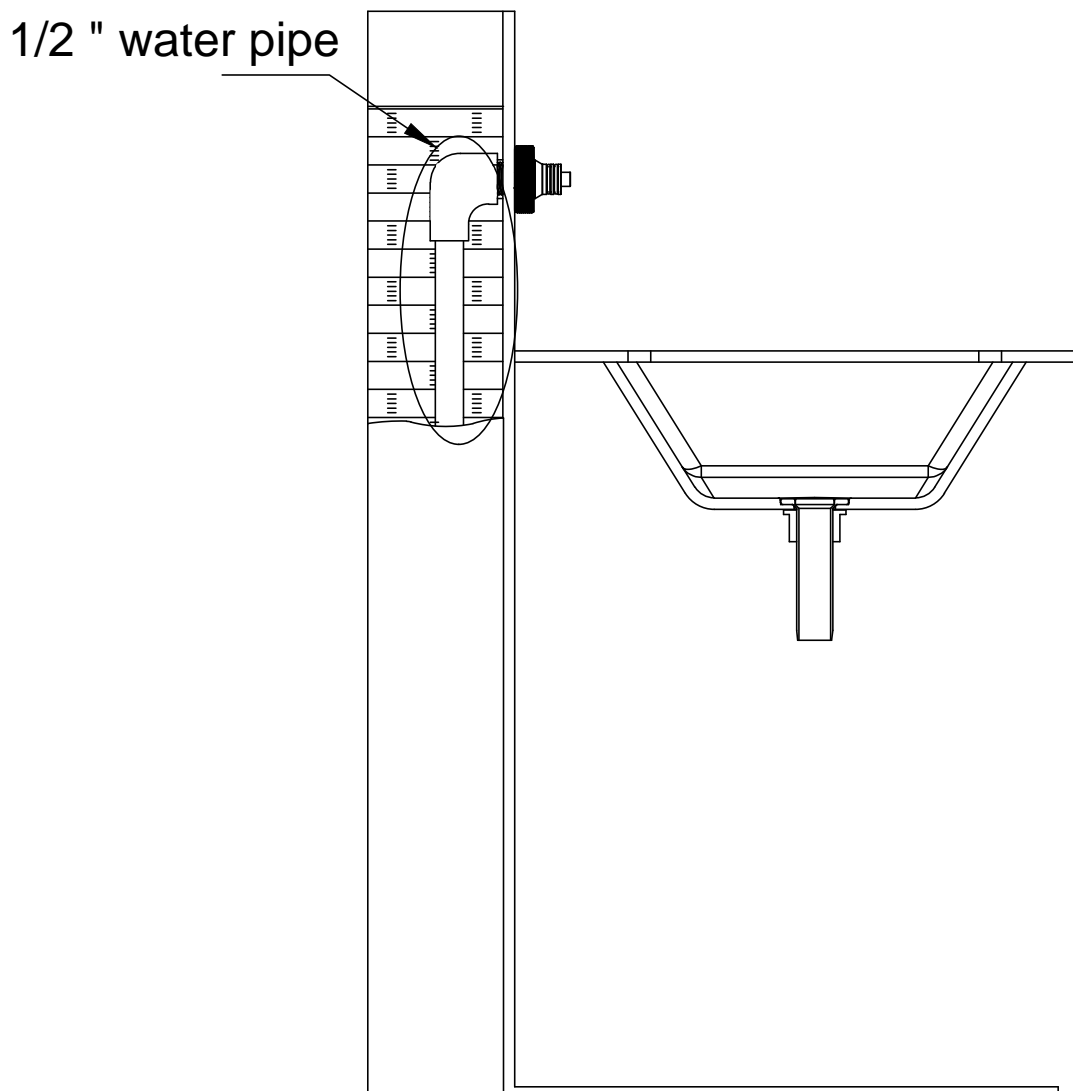
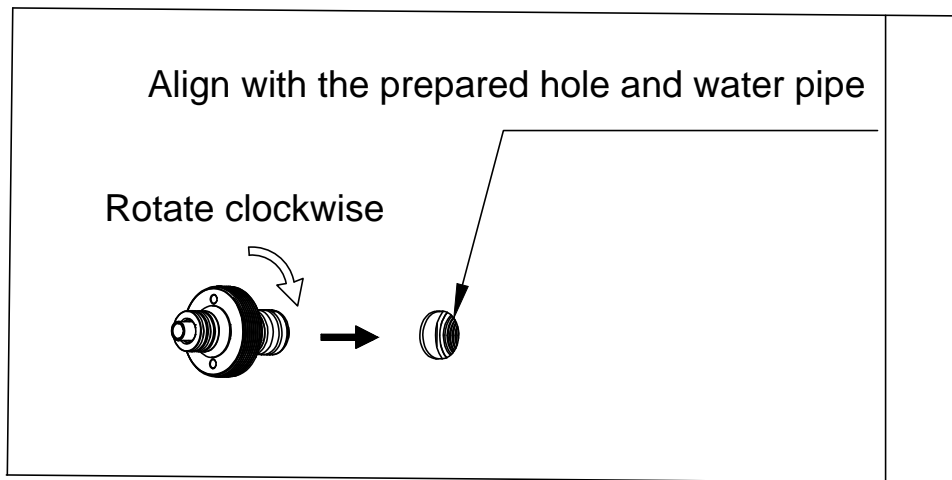


Tile opening size

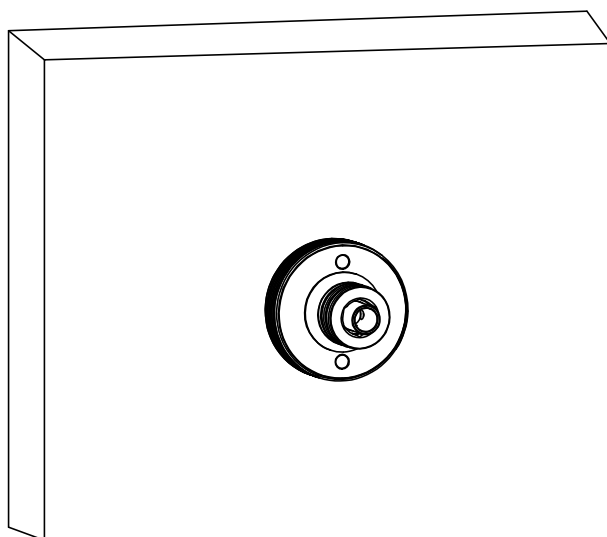
# Installation process

2.Installing the self-closing valve: Wrap the thread seal tape on the tail of the self-closing valve and connect it to the 1/2" water pipe.



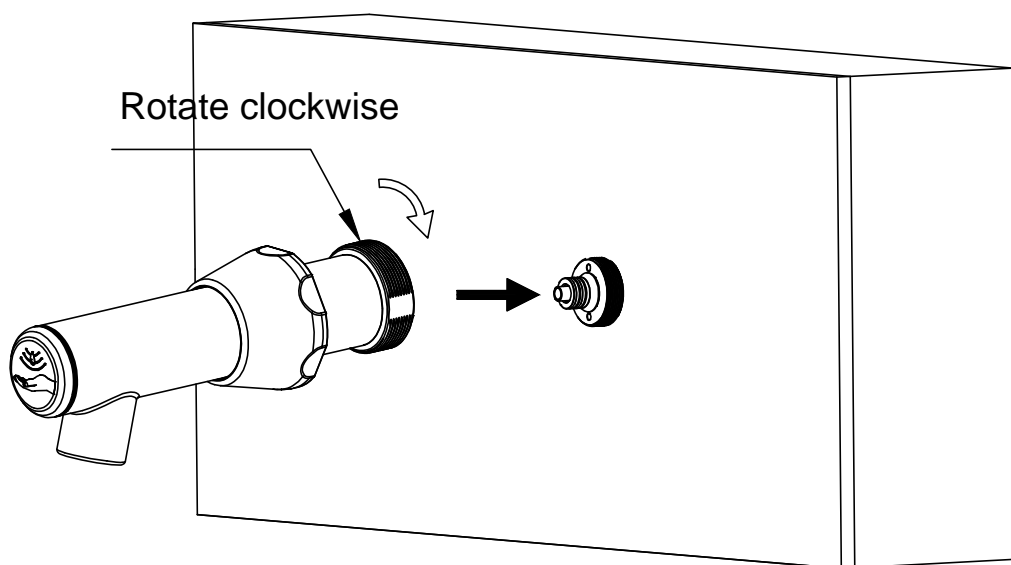


Installation of the self-closing valve completed

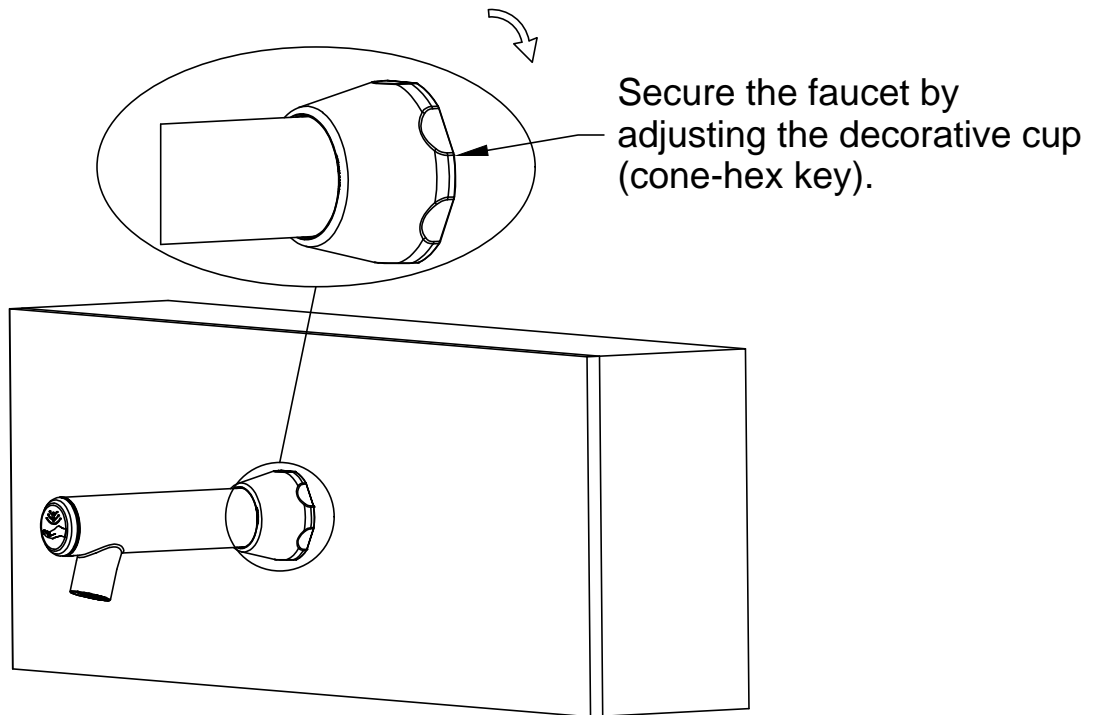


## Installation process

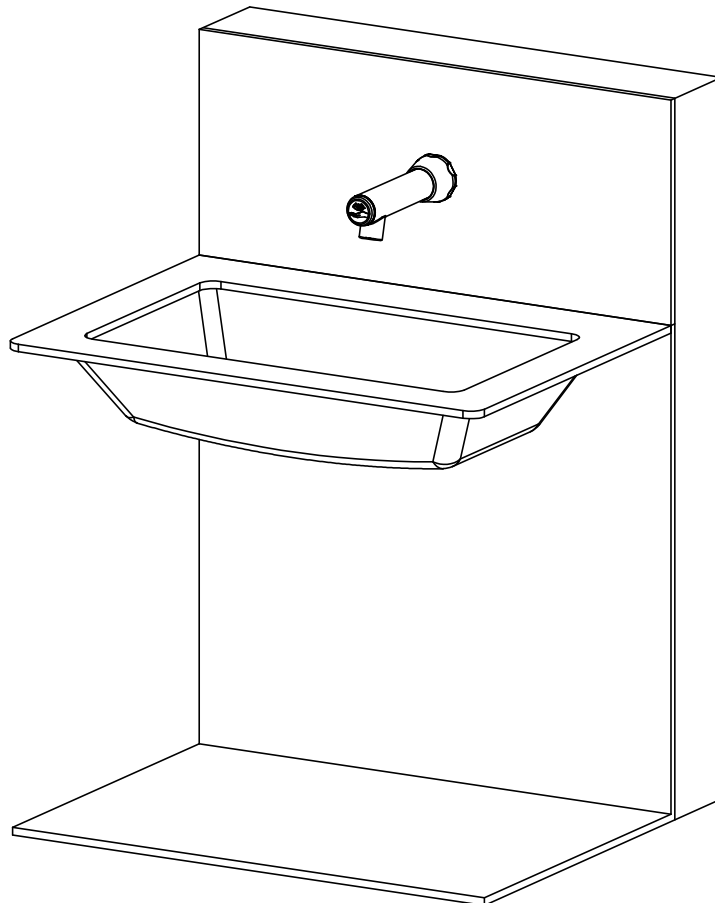
3. Installing the faucet body: Align the faucet body with the self-closing valve and ensure a leak-free connection.



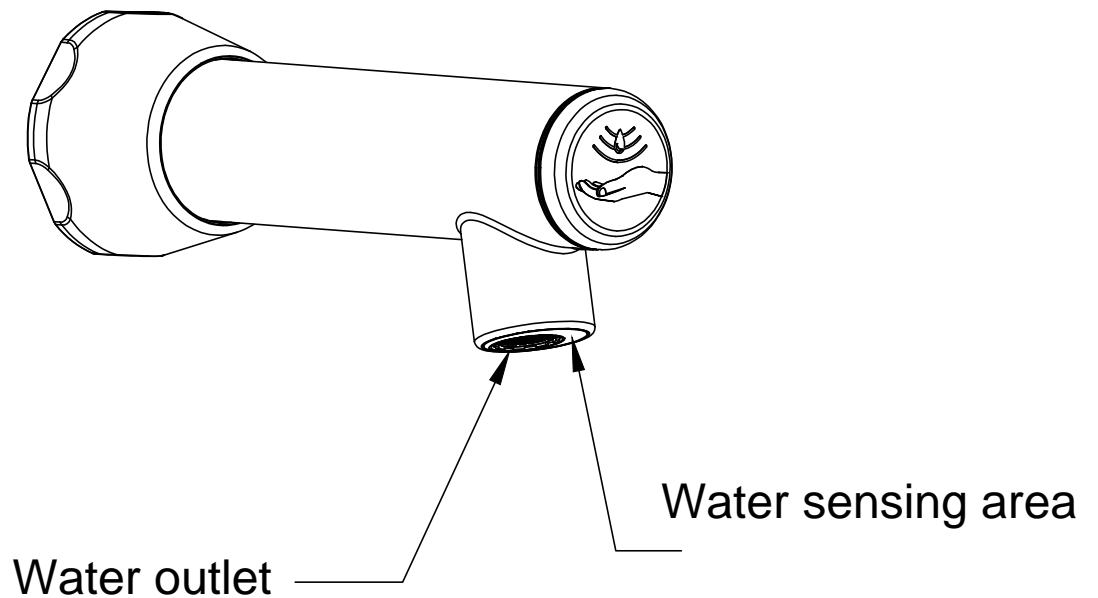
Rotate clockwise



Faucet installation completed. ✓



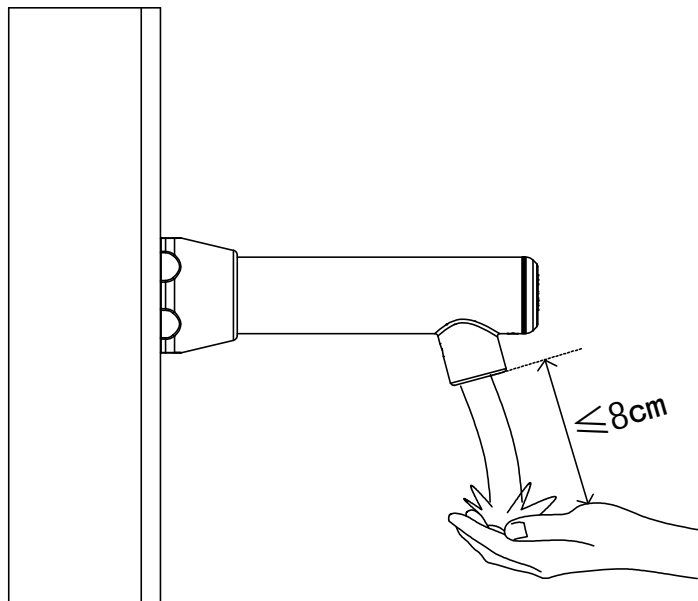
# WST18B Wall-Mounted Integrated Sensor Faucet Use Manual





# Instructions for use

1. Water flow: Move your hand to the front of the sensor head (  $\leq 8\text{cm}$ ) to activate the water flow. After moving away for 1 second, the water flow will stop.



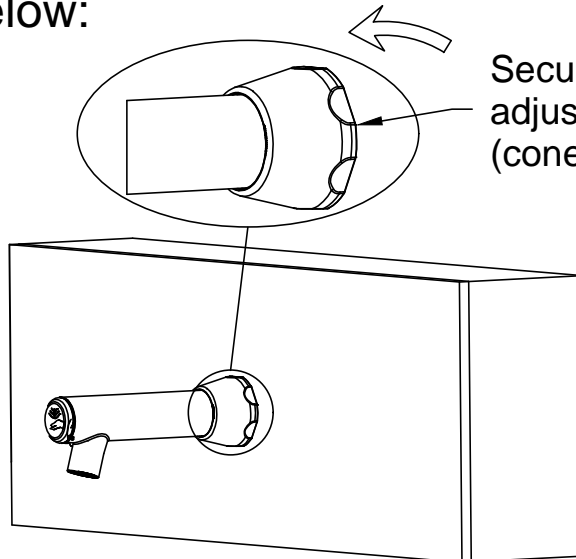
# Cleaning and maintenance

Cleaning the mesh screen: After prolonged use, remove the mesh screen for cleaning by loosening the self-closing valve on the faucet body.

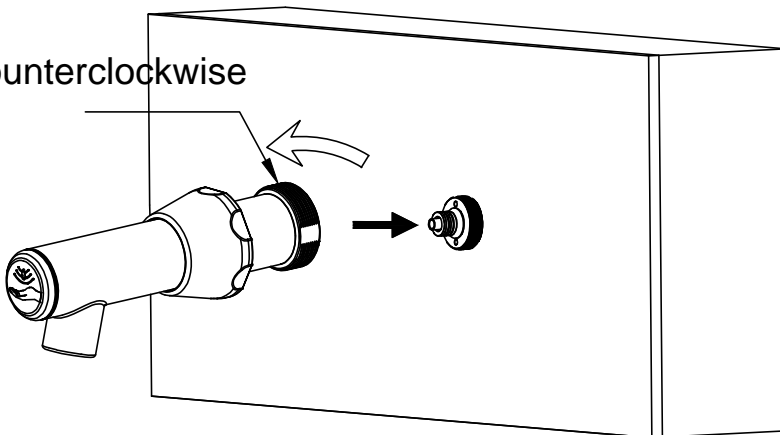
Follow the steps below:

Rotate counterclockwise

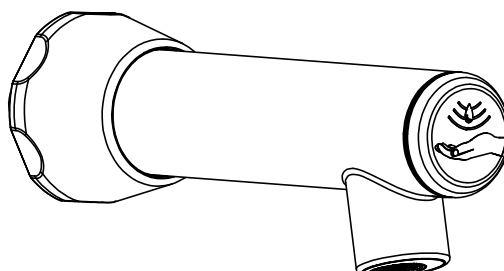
Secure the faucet by adjusting the decorative cup (cone-hex key).



Rotate counterclockwise



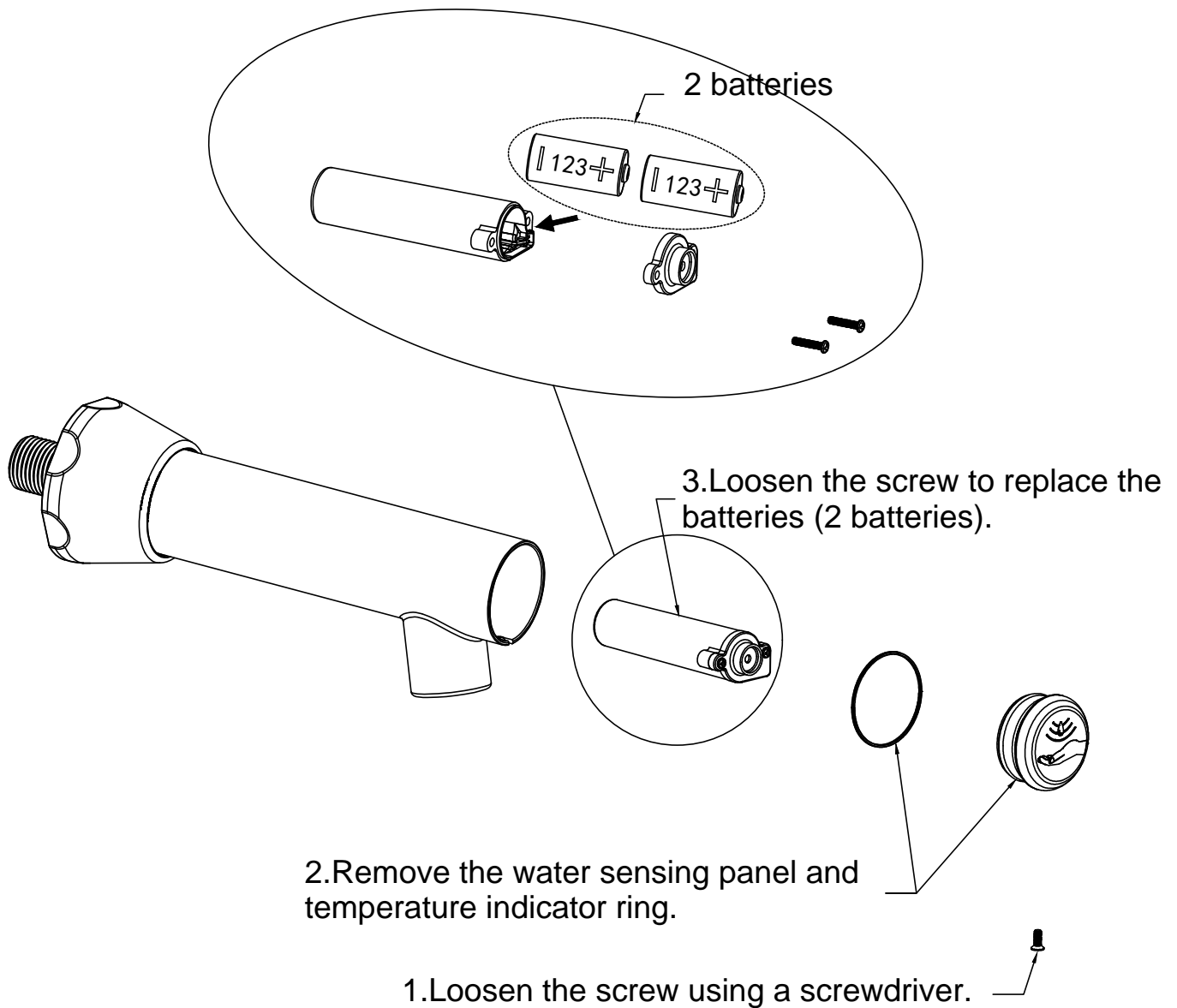
2.Remove the mesh screen and clean it with water.



# Battery replacement

For prolonged use, it is necessary to replace the batteries to maintain normal operation.

Follow the steps below:



WALL-MOUNTED INTEGRATED SENSOR FAUCET

PRODUCT SPECIFICATION



Product type:Touchless Induction Faucet

Product Model:WST18

Product Material:304 stainless steel

Waterproof:IP68

Anti-interference level:V10/M

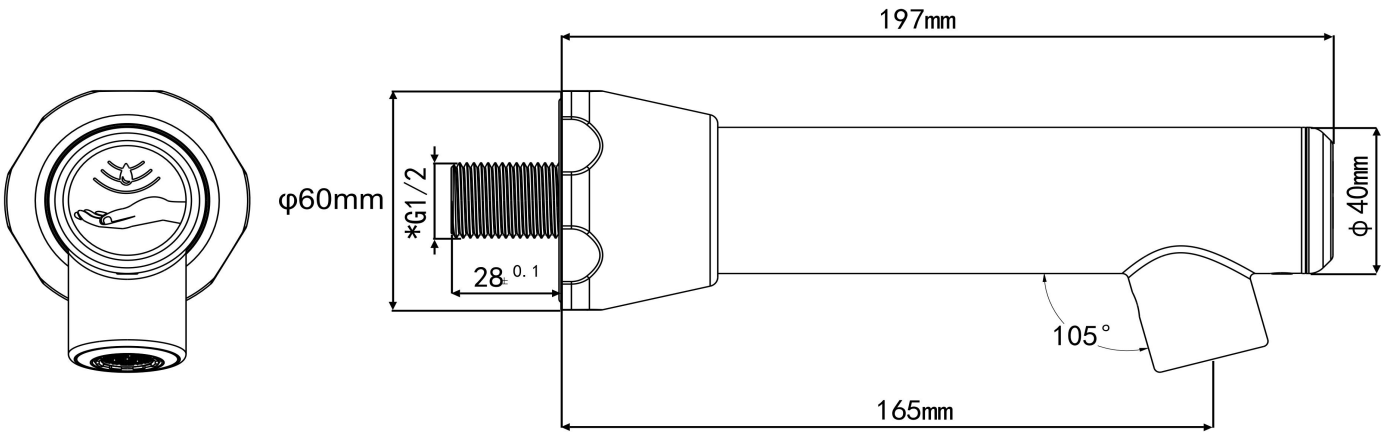
Water outlet control: Infrared induction water outlet

Temperature control: Non-adjustable temperature

Installation method: Wall-mounted installation

Number of installation holes: Single hole

● About product dimensions:



Product Length:	197mm
Spout reach:	165mm
Threaded connector:	G1/2

● About power supply:

Built-in battery specification

Number of batteries: 2 pcs (batteries not included in the package)

Battery type: CR123

Voltage: 6V

Standby power: 0.00015W

Operating power: 3W (0.02s instant on/off valve switch)

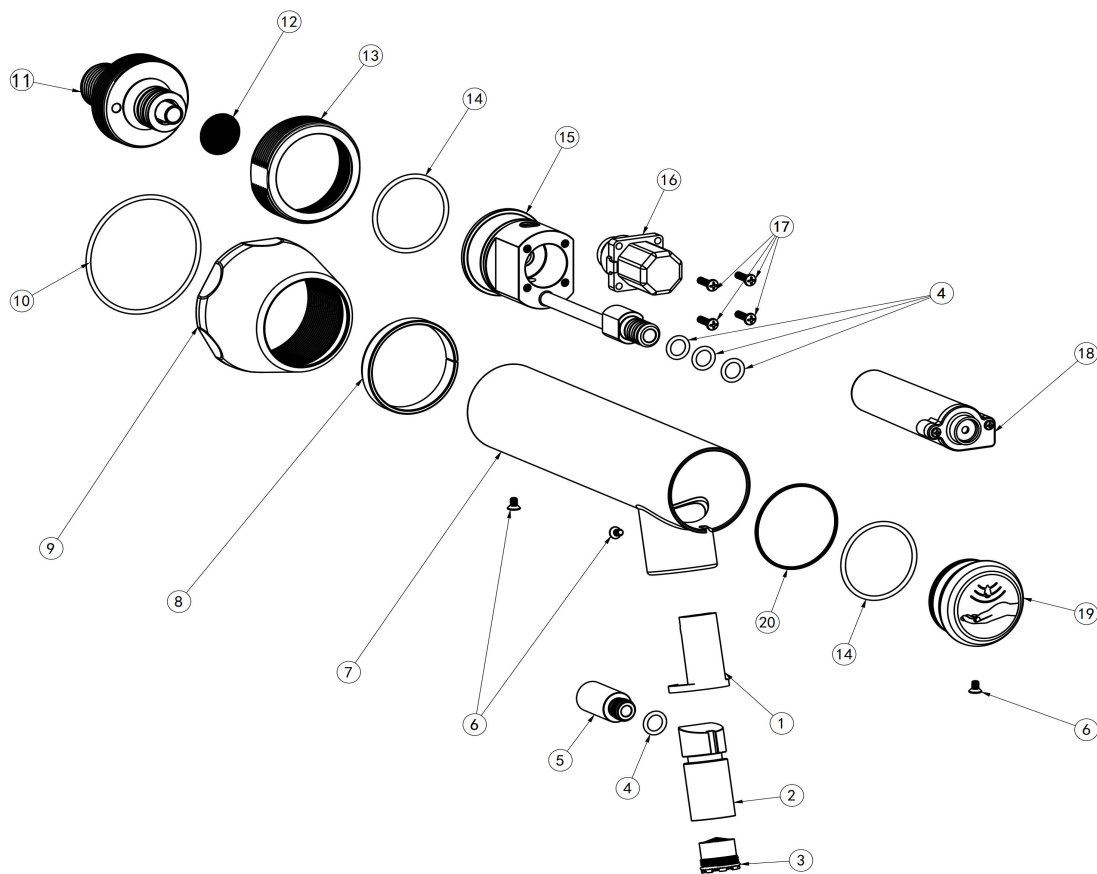
Battery life: 100,000 times



● Product technical specifications:

Sensing distance:	5-10cm automatic adjustment of sensing distance		Flange seat with double-layer sleeve:	Φ44xL7.5
Opening valve time:	0.2S		Decorative cup:	Φ62.5xΦ40.4xL40; M48x1.5; SW60
Closing valve time:	1S		O-ring:	Φ56x2
Delay closing valve time:	60S		Self-closing valve:	M42x1.25xL57; G1/2
Operating water pressure range:	0.05MPa~1MPa		Stainless steel mesh screen:	Φ19xT0.5; 80 mesh
Operating temperature range:	1-60℃		Locking nut:	M48x1.5xM42x1.25x37xL15
Flow rate:	5LPM		O-ring:	Φ37x2
Water outlet:	Φ18.8xM10x1xL43.5		Main body core:	Φ40.5xL125
Aerator:	Neoperl;Honeycomb surface; M16.5x1-8gxL15;		Solenoid valve:	Wire length 1.1cm; Male connector; DC3.6V; POM plastic valve body
O-ring:	Φ11.1x1.8 (Outer diameter x Wire diameter)		Cross slot pan head screw:	M3xL10; Cross slot pan head
Outlet adapter:	Φ14xΦ5xL30.5; M10x1		Battery box	Wire length 8cm (Red female connector)
Cross recessed countersunk screw:	M3xL5		Body pipe cover:	Φ40xL20 (with indicator logo)
Faucet body pipe:	Φ40xL171; Pipe wall thickness 1.5mm		Temperature indicator ring:	Blue, Φ40xΦ38xD1

● Parts & Components:



No.	Part name	Serial number	Quantity
1	Infrared sensor head	34300249933	1
2	Water outlet	33100320401	1
3	Aerator	36200089936	1
4	O-ring	34000010653	4
5	Outlet adapter	33600400401	1
6	Cross recessed countersunk screw	33700420401	3
7	Faucet body pipe	35500410411	1
8	Flange seat with double-layer sleeve	33900392650	1
9	Decorative cup	33500340411	1
10	O-ring	34000440653	1
11	Self-closing valve	21000359901	1
12	Stainless steel mesh screen	34100510401	1
13	Locking nut	33800450401	1
14	O-ring	34000410653	2
15	Main body core	30100020409	1
16	Solenoid valve	34300209901	1
17	Cross slot pan head screw	33700390401	4
18	Battery box	34300289953	1
19	Body pipe cover	33500400411	1
20	Temperature indicator ring	33500322455	1

Due to our commitment to continued product improvement, specifications are subject to change without notice.